

Glasswool Insulation Batts

*For Comfort and
Energy Saving*

Board for Noise Control and Thermal Insulation

Long and resilient glass
fibre, bonded with a thermal
setting resin



Description

UPA Glasswool Insulation Batts are made of long and resilient glass fibre, bonded with a thermal setting resin. The UPA Glasswool Batts are a superior thermal insulation with excellent sound absorption properties. Manufactured by the advanced and unique rotary flame attenuation process, it accomplishes both high performance and economy with ease of installation in either wood or steel stud partition and in floor / ceiling system applications.

Applications

UPA Glasswool Insulation Batts are designed specifically for press-fit installation without the need for stapling or fastening. The UPA Batts can be fitted between timber or steel studs in a wall cavity, and in floor / ceiling system applications. They resist vibration or shakedown and fit readily around uneven surfaces. Tests have shown improved acoustic rating when sound control batts are installed under slight compression.

Benefits & Features

FIRE RESISTANCE: Building codes call for wall, floor and ceiling assembly to have certain hourly fire rating when tested in accordance with ASTM E119 or other equivalent standards. The quality, thickness and number of layers of gypsum boards are the critical factors that affect hourly fire rating. Typically a timber or steel stud wall having one layer of 5/8" thick gypsum board on each side with UPA Glasswool Insulation Batts within the infill cavity will have one hour fire rating.

DURABLE: UPA Glasswool Insulation Batts are non-combustible. Being non-cellular and non-hygroscopic, they do not promote capillary action. In addition, they are highly resistant to humidity, aging, corrosion and rust.

ACOUSTIC CONTROL: UPA Glasswool Insulation Batts have excellent acoustic properties which effectively reduce the transmission of unwanted noise. This is ideal for drywall partition systems for rooms and offices in residential, commercial and industrial buildings.

THERMAL PERFORMANCE: UPA Glasswool Insulation Batts offer excellent thermal performance by reducing heat gain and loss through partition walls.

UPA Glasswool Insulation Batts are non-combustible and are tested in accordance with:

A.S. 1530.3.1989 Fire hazard property of material
B.S. 476 : Part 6 Fire propagation
B.S. 476 : Part 7 Surface spread of flame

Comply with BOMBA Class "O" certification and other Building Regulations.

Early Fire Hazards

UPA Glasswool Insulation Batts do not ignite, evolve heat, spread flame or develop smoke when test in accordance with Australian Standard 1530 : Part 3-1982.

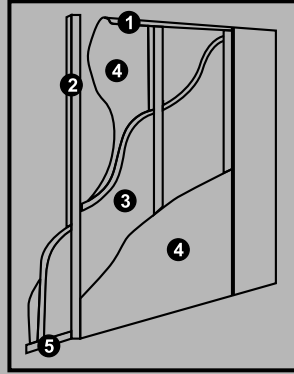
	Unfaced	Faced
Ignitability Index	0	0
Heat Evolved Index	0	0
Spread of Flame Index	0	0
Smoke Development Index	0-1	0-1

Surface Burning Characteristics

UPA Glasswool Batts meet the surface Burning Index requirements of NFPA 90A and 90B standards FHA when tested in accordance with ASTM E84.

Fire Hazard Classification 25/50.

1. Top Metal Track
2. Metal Stud
3. UPA Glasswool Batts
4. Gypsum Board
5. Bottom Metal Track



Partition Configuration	Wall Thickness		STC	Thickness (mm)
	Glasswool (mm)	STC		
41mm steel stud : single layer 13mm gypsum board each side	70	42	45	
41mm steel stud : single layer 16mm gypsum board each side	70	43	45	
41mm steel stud : single layer 13mm gypsum board each side	70	50	45	
Double 41mm steel stud : double layer 13mm gypsum board each side	102	60	45	
64mm steel stud : double layer 13mm gypsum board each side	70	45	651	
64mm steel stud : double layer 16mm gypsum board each side	70	47	65	
64mm steel stud : double layer 13mm board each side : single layer other side	70	52	65	
64mm steel stud : double layer 16mm gypsum board each side : single layer other side	70	56	65	
64mm steel stud : double layer 13mm gypsum board each side	70	57	65	
92mm steel stud : single layer 13mm gypsum board each side	102	49	95	
92mm steel stud : single layer 16mm gypsum board each side	102	50	95	
92mm steel stud : single layer 16mm gypsum board each side	102	50	95	

General Properties

Maximum Service Temperature (350 C / 662 F)

Moisture absorption	The moisture absorption of the insulation shall be not more than 5% by weight when tested in accordance with ASTM C665.
Alkalinity	PH9, slightly alkaline
Corrosiveness (with steel, copper or aluminum)	Does not accelerate
Odour	None
Capillarity (after 24)	Negligible
Shrinkage	None
Thermal resistance	1.2-2.1m K/W
Resistance to fungus and bacteria	Does not promote

Tested STC Systems

Sound transmission loss for acoustic partition system (non load bearing) of UPA Glasswool Insulation Batts within single layer of 12.5mm thick gypsum board on each side.	Thermal resistance (m ² K/W)	STC Rating as per ASTM E90: 1990 Standard
50mm thickness x 20kg/m ³ density UPA Glasswool Insulation Batts	R 1.3	STC 48
77mm thickness x 20kg/m ³ density UPA Glasswool Insulation Batts	R 1.9	STC 50

Partition Configuration	Wall Thickness		STC	Thickness (mm)
	Glasswool (mm)	STC		
92mm steel stud : double layer 13mm gypsumboard one side, single layer other side	102	53	95	
92mm steel stud : double layer 16mm gypsumboard one side, single layer other side	102	55	95	
92mm steel stud : double layer 13mm gypsumboard each side	102	56	95	
92mm steel stud : double layer 16mm gypsumboard each side	102	59	95	
152mm steel stud : single layer 16mm gypsumboard each side	159	51	155	
152mm 25guage (0.53mm) steel stud double layer 16mm gypsum board each side single layer other side	159	54	155	
152mm steel stud : resilient channels single layer 16mm gypsum board each side	159	55	155	
152mm 25 guage (0.53mm) steel stud double layer 16mm gypsum board each side	159	58	155	
152mm steel stud, resilient channels double layer 16mm gypsum board one side single layer other side	152	60	155	
152mm 20 guage (0.91mm) steel stud : resilient channels : three layer 16mm gypsum board each side, double layer 16mm gypsum board other side	152	68	55	



UPA Direct

173 Arden Street
North Melbourne, Victoria 3051 AUSTRALIA
1300 UPA Direct - 1300 872 347
Ph: +61 3 9329 2165
Fax: +61 3 9329 2189